

Plug-In

Frequency Mixer

TFM-3H+

Level 17 (LO Power +17 dBm) 0.1 to 250 MHz



CASE STYLE: B13

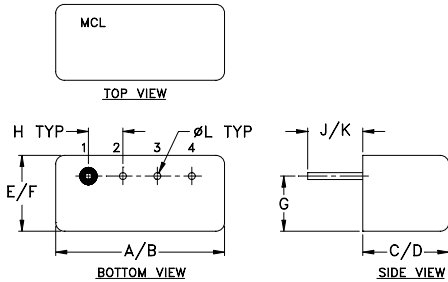
Maximum Ratings

Operating Temperature	-55°C to 100°C
Storage Temperature	-55°C to 100°C
RF Power	200mW
IF Current	40mA
Permanent damage may occur if any of these limits are exceeded.	

Pin Connections

LO	4
RF	1
IF	2
GROUND	3
CASE GROUND	3

Outline Drawing



Outline Dimensions (inch/mm)

A	B	C	D	E	F
.480	.500	.240	.255	.210	.230
12.19	12.70	6.10	6.48	5.33	5.84
G	H	J	K	L	wt
.16	.100	.14	.20	.020	grams
4.06	2.54	3.56	5.08	0.51	1.9

Features

- low conversion loss, 4.58 dB typ.
- good L-R isolation, 40 dB typ.
- rugged welded construction
- hermetically sealed

Applications

- VHF
- aviation
- maritime, defense & federal communications

Electrical Specifications

FREQUENCY (MHz)		CONVERSION LOSS (dB)			LO-RF ISOLATION (dB)			LO-IF ISOLATION (dB)								
LO/RF	IF	Mid-Band		Total Range Max.	L	M	U	L	M	U						
f_L - f_U		\bar{X}	σ		Typ.	Min.	Typ.	Min.	Typ.	Min.	Typ.	Min.				
0.1-250	DC-250	4.58	0.11	7.0	50	45	40	30	28	23	45	40	35	25	26	20

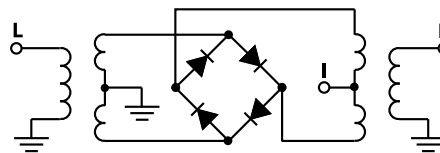
1 dB COMP.: +14 dBm typ.

L = low range [f_L to $10 f_L$] M = mid range [$10 f_L$ to $f_U/2$] U = upper range [$f_U/2$ to f_U]
m = mid band [$2f_L$ to $f_U/2$]

Typical Performance Data

Frequency (MHz)		Conversion Loss (dB)	Isolation L-R (dB)	Isolation L-I (dB)	VSWR RF Port (:1)	VSWR LO Port (:1)
RF	LO	LO +17dBm	LO +17dBm	LO +17dBm	LO +17dBm	LO +17dBm
0.10	30.10	5.43	66.42	66.28	1.40	1.51
5.00	35.00	4.99	61.64	64.07	1.40	1.46
10.00	40.00	4.91	60.33	61.62	1.38	1.52
20.00	50.00	4.94	61.22	60.51	1.39	1.51
34.57	64.57	4.92	57.23	56.07	1.39	1.52
50.00	80.00	4.92	53.98	52.73	1.39	1.48
60.42	90.42	4.92	52.33	50.92	1.38	1.45
69.04	99.04	4.87	51.05	49.22	1.38	1.47
86.27	56.27	4.80	48.52	46.16	1.35	1.43
100.00	70.00	4.79	46.72	44.44	1.35	1.41
103.51	73.51	4.84	46.41	44.07	1.33	1.44
129.36	99.36	4.89	43.29	41.27	1.31	1.45
146.59	116.59	4.91	41.82	40.17	1.30	1.50
155.21	125.21	4.90	41.17	39.68	1.29	1.46
172.44	142.44	5.00	39.95	38.86	1.24	1.46
189.68	159.68	5.08	39.60	38.24	1.22	1.45
224.15	194.15	5.21	37.56	36.93	1.21	1.47
232.76	202.76	5.26	36.71	36.82	1.18	1.52
241.38	211.38	5.24	35.87	36.43	1.16	1.53
250.00	220.00	5.23	35.46	36.00	1.14	1.52

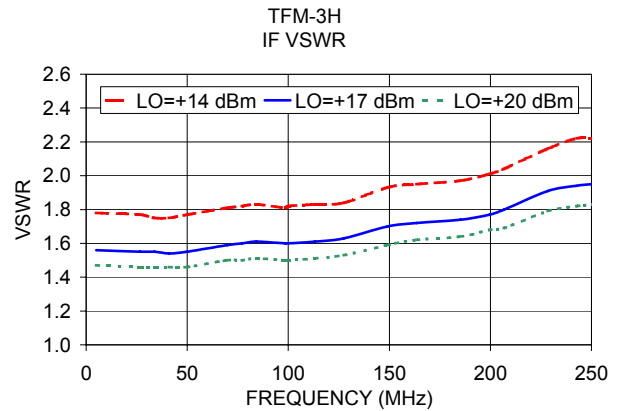
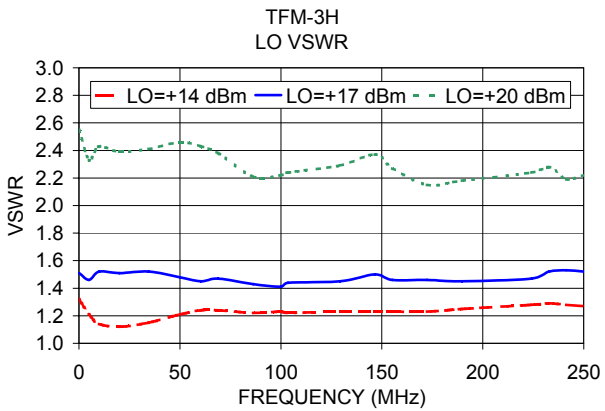
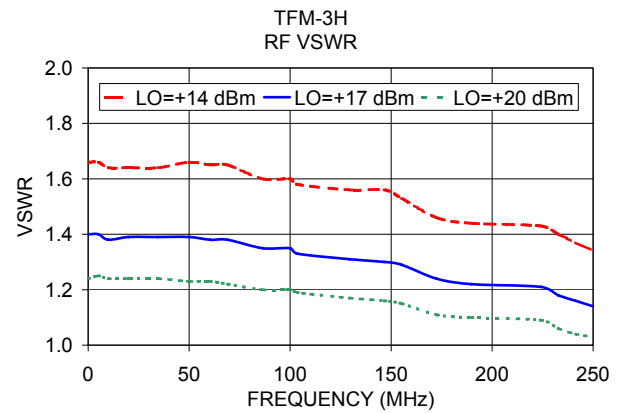
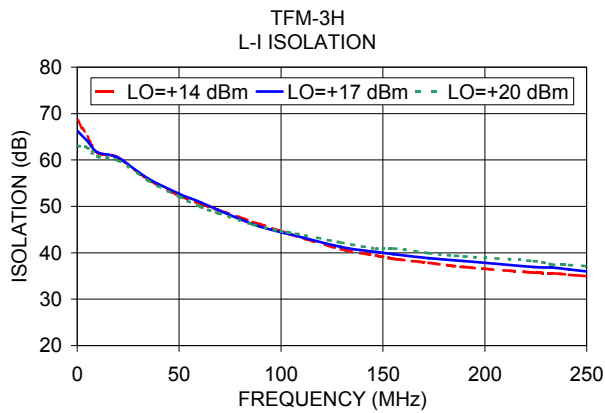
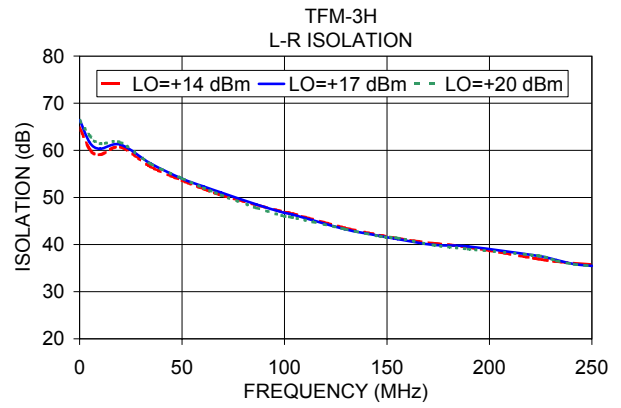
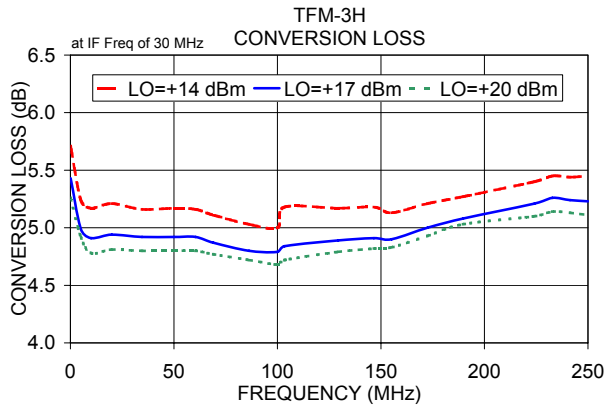
Electrical Schematic



Notes

- Performance and quality attributes and conditions not expressly stated in this specification document are intended to be excluded and do not form a part of this specification document.
- Electrical specifications and performance data contained in this specification document are based on Mini-Circuit's applicable established test performance criteria and measurement instructions.
- The parts covered by this specification document are subject to Mini-Circuits standard limited warranty and terms and conditions (collectively, "Standard Terms"); Purchasers of this part are entitled to the rights and benefits contained therein. For a full statement of the Standard Terms and the exclusive rights and remedies thereunder, please visit Mini-Circuits' website at www.minicircuits.com/MCLStore/terms.jsp





Notes

- A. Performance and quality attributes and conditions not expressly stated in this specification document are intended to be excluded and do not form a part of this specification document.
- B. Electrical specifications and performance data contained in this specification document are based on Mini-Circuit's applicable established test performance criteria and measurement instructions.
- C. The parts covered by this specification document are subject to Mini-Circuits standard limited warranty and terms and conditions (collectively, "Standard Terms"); Purchasers of this part are entitled to the rights and benefits contained therein. For a full statement of the Standard Terms and the exclusive rights and remedies thereunder, please visit Mini-Circuits' website at www.minicircuits.com/MCLStore/terms.jsp

